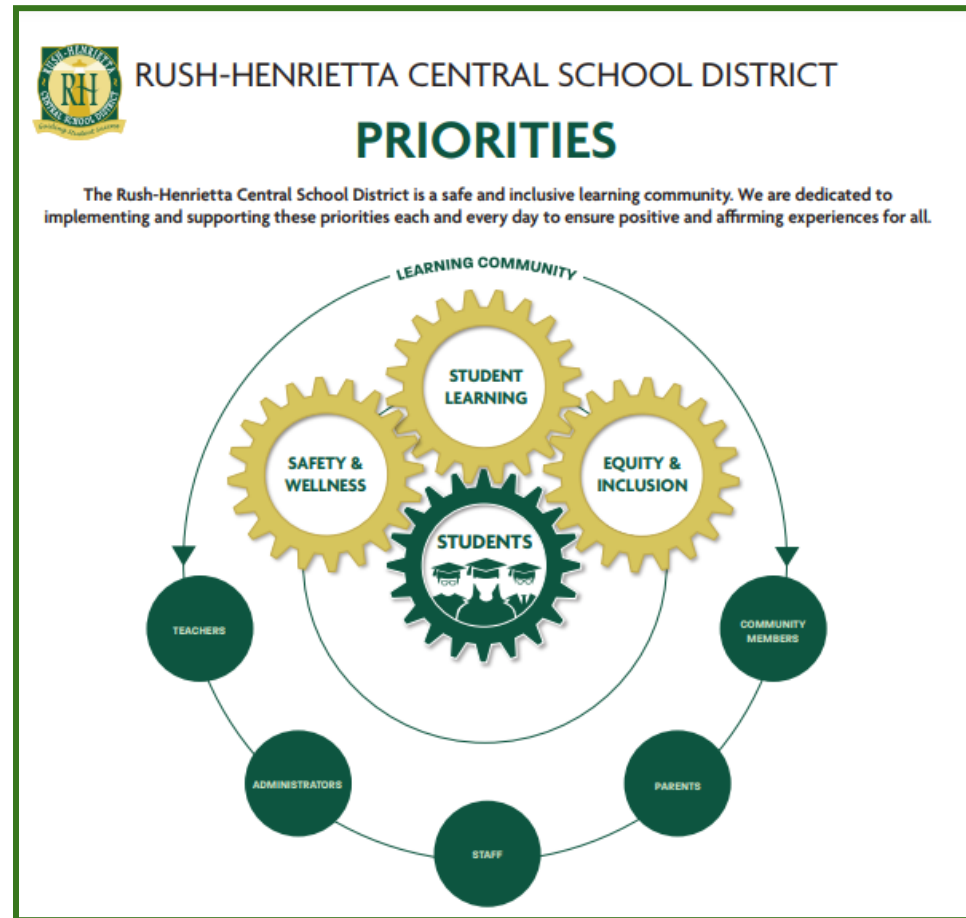


# Roth JHS School Improvement Plan

Beginning of Year Report  
2022-2023



## Roth Junior High School Improvement Plan 2022-2023

### District Priority: Student Learning

**Goal:** At Roth Junior High School, we will closely monitor the student's progress of text comprehension, written expression and mathematical practices to determine appropriate interventions and enrichment opportunities for all students.

**Target:** Increase the percentage of students NWEA MAP Reading at the 61% percentile and increase the percentage of students receiving a 3 or higher on the NYS ELA exams.

#### Improvement Actions:

- Improve analysis of text, making inferences and connections within the text.
- Build the skills for students to read, think and write in response to informational text, literature, charts, images, and graphs in all subject areas.
- Increase the amount of support for our students by adding literacy boost for 7th and 8th graders to focus on improving comprehension and written expression.
- Provide 1:1 or small group conferencing for feedback on students' writing and comprehension.

#### Monitor:

- Monthly progress monitoring meetings with AIS providers, ENL, SPED, and ELA teachers using building progress monitoring documents, MAP data and AIMSWEB.

#### Impact:

##### **Measures of Academic Progress (MAP) (Reading)**

Proficiency rates for NWEA MAP assessments for the 2022-23 school year are reported below. Prior year proficiency rates (2021-2022) appear in parentheses. Expected proficiency rates appear as targets (percent of students scoring at or above the 61% percentile).

**Reading: 22-23/ 21-22**

	Fall	Winter	Spring	Target	Gap*	Trend**
MAP 7 (CCR)	49(51)	___ (46)	___(42)	55%	-6%	
MAP 8 (CCR)	42(50)	___ (38)	___(36)	55%	-13	

61% places a student above the national norm average which aligns with the required level of proficiency on NYS assessments

\*Gap is the percentage difference of the current administration to the target.

\*\*Trend shows overall growth from fall administration,

See appendix for cohort data

##### **NYS ELA 7 and 8**

	2023	2022	2019	Benchmark	Gap	Trend
ELA 7		53% N=143	32%	60%	-7	
ELA 8		46% N=153	42%	55%	-9	

N= Total number of tested students

See appendix for cohort data

**Reflection:** Results have improved for ELA 7. The program, focused on literacy instruction and reading comprehension has shown improvement in our state testing results. Focus on literacy instruction will continue this year with an emphasis on written expression in all content areas. We also continue to see a rise in the number of students showing us what they know on these state assessments with the administration of the exams.

**Target:** Increase the percentage of students NWEA MAP Math at the 61% percentile and increase the percentage of students receiving a 3 or higher on the NYS Math exams.

**Improvement Actions:**

- Improve the problem solving and conceptual understanding of mathematical concepts.
- Building mathematical skills, practices and conceptual understandings using the read, draw, write strategy in all math classes.
- Increase the amount of intervention support for students by adding an academic center for 7th and 8th graders.

**Monitor:**

- Monthly progress monitoring meetings with AIS providers, ENL, SPED, and Math teachers using building progress monitoring documents and MAP data.

**Impact:**

**Measures of Academic Progress (MAP) Math**

Proficiency rates for NWEA MAP assessments for the 2022-23 school year are reported below. Prior year proficiency rates (2021-2022) appear in parentheses. Expected proficiency rates appear as targets (percent of students scoring at or above the 61% percentile).

**Math 22-23/ 21-22**

	Fall	Winter	Spring	Benchmark	Gap*	Trend**
MAP 7	49(49)	____(42)	____(45)	55%	-6	+
MAP 8	44(43)	____(35)	____(35)	55%	-11	+

61% places a student above the national norm average which aligns with the required level of proficiency on NYS assessments

\*Gap is the percentage difference of the current administration to the target.

\*\*Trend shows overall growth from fall administration,

See appendix for cohort data

**NYS Math 7 and 8**

	2023	2022	2019	Benchmark	Gap	Trend
Math 7		48% N=132	47%	55%	-7	
Math 8		25% N=112	29%	30%	-5	

N = total number of tested students

**Reflection:** There was an increase in proficiency in Math 7. The program focuses on improving mathematical skills, conceptual understanding using the RDW strategy is showing improvements. Focus will be placed on improving results in 8th grade this year.

**Target:** To increase the passing rates and college and career readiness on the Earth Science Regents exam.

**Improvement Actions:**

- Increase the passing rate in Earth Science by scaffolding the materials to make accessible for all students and improving our instructional practices with culturally responsive practices and increasing rigor with hands-on learning activities.
- Increase the amount of support for ELL students by adding an ENL teacher to Earth Science class. Intersession will be offered 3 times this year.

**Monitor:**

- Monthly progress monitoring meetings with ENL and Earth Science teachers.

**Impact:**

**Earth Science Regents Exam**

Passing rates for the NYS Earth Science Exam are reported below.

N= total number of tested students

	2023	2022	2019	Benchmark	Gap	*Trend
Earth Science Passing		64% N=165	80% N=218	80%	-16	▼
CCR		40%	63%	75%	-35	

**Reflection:**

Earth Science results continue to decline. A focus will be placed on passing rates for all students, specifically the ELL population.

## Roth Junior High School Improvement Plan 2022-2023

### District Priority: Equity and Inclusion

**Goal:** At Roth Junior High School, all students will learn within environments that are welcoming, affirming, and culturally responsive. Students will learn to advocate for themselves and each other, value and celebrate differences, and become independent learners.

**Target:** To decrease referral rates and disproportionality for SWDs and subgroups.

#### Improvement Actions:

- Train Administrative Team in restorative discipline.
- Update disciplinary response to include restorative contracts and focused lessons in response to discipline.
- Increase adult presence in common areas and reinforce SEL skills.
- Develop plans for students with multiple infractions to target behavioral change plans to improve behavior.
- Teach and reinforce social emotional learning skills, culturally responsive best practices, conflict resolution and de-escalation.

#### Monitor:

- Monthly data review of suspensions and in unstructured areas of the building.
- Review student contracts and analyze discipline data trends for this specific group of students.

#### Impact:

**Student Referral Data:** Student referral data appears by cohort group below.

	Jan 22-23	June 22 -23	2021-2022	2019-2020	2018-2019
<b>Cohort Groups below</b>			<b>Total Number of Referrals:</b> 850	<b>Total Number of Referrals:</b> 469	<b>Total Number of Referrals:</b> 400
<b>ELL</b>			19 (2%)	21 (4%)	12 (3%)
<b>Students with Disabilities</b>			187 (22%)	138 ( 29%)	143 (36%)
<b>Asian</b>			63 (7%)	10 (2%)	8 (2%)
<b>Black or African American</b>			211 (25%)	127 (27%)	127 (32%)
<b>Hispanic</b>			112(13%)	60 (13%)	65 (16%)
<b>Multiple Races</b>			73(9%)	61 (13%)	51 (13%)
<b>White</b>			382 (45%)	211(45%)	149 (37%)

#### Reflection:

There has been a dramatic increase in the number of referrals last year. The referrals and suspensions were reviewed with the administrative team and school community. A focus will be placed on interventions and supports for students that display violent conduct and insubordination.

**Target:** To increase the number of special education students that are obtaining the essential credits for graduation.

**Improvement Actions:**

- Develop and scaffold differentiated lessons that help SWD access grade-level standards.
- Small group instruction in the general education setting.
- Provide Learning Lab as a support period to teach and reteach content.
- Coteachers will utilize various models of co-teaching in general education classrooms.

**Monitor:**

- Monthly progress monitoring data review with SPED teachers.

**Impact:**

The chart below records the percentage of credits earned toward graduation for students with disabilities at Roth Junior High School in the 2022-2023 school year.

Course	Total # of eligible students	22-23 Mid Year % of students earning Essential Course Credit	22-23 Year End % of students earning Essential Course Credit	21-22 Year End % of students earning Essential Course Credit
Grade 8 LOTE	10			4/7 - 57%
Earth Science	25			8/13 - 62%
Foundations in Art - 8th grade	1			5/5 - 100%
English 9	16			9/9 - 100%
Global 9	16			9/9 - 100%
Living Environment	16			9/9 - 100%
HS Math Prep	8			6/6 - 100%
Algebra I	8			3/3 - 100%

\*Students should enter tenth grade with at least five credits earned.

**Reflection:**

The majority of the students with disabilities are obtaining credits and are on track at the end of grade 9. Consistent monitoring the credits obtained is essential to keep the students on track.

## Roth Junior High School Improvement Plan 2022-2023

### **District Priority: Safety and Wellness**

**Goal:** At Roth Junior High School, we must ensure that we are expanding our mental health supports and services to address existing and emerging needs of students and staff in the areas of mental wellness and social-emotional well-being. This is especially important as we seek to create a safer, equitable, and inclusive learning environment for all.

**Target:** To improve our student satisfaction results specifically these two questions will be surveyed.  
*Do you enjoy attending school and Do you have an adult you are connected to at school?*

**Improvement Actions:**

- Analyze data received from the Student Voice Survey and district student satisfaction survey.
- Utilize the 2x10 strategy used by teachers with students that are not connected.
- Meet with the Student Council to review and develop plans to address the needs from the survey.

**Monitor:**

- Review data results after administration of the school based and district based surveys

**Impact:**

Below are the results from the Fall Student Voice survey. This will be administered again in the winter, the district survey will be administered in the spring.

Survey Question	Fall	Winter	Spring	Benchmark
<i>Do you enjoy attending school at Roth?</i>	80%			90%
<i>Do you have an adult you are connected with at school?</i>	61%			80%

**Reflection:** Over 80% of our students enjoy attending Roth JHS. Over 61% of our students have an adult they are connected to at school. The results will be reviewed and an emphasis will be placed on students that are not connected to an adult at Roth JHS.

**Target:** To increase the student satisfaction response rate to the following questions: *Students in this school respect each other. Students of different cultural backgrounds, races, or ethnicities get along well at school. I feel safe at school.*

**Improvement Actions:**

- Meet with a focus group of students to discuss results.
- Analyze results by cohort.
- Develop a plan with student leaders to address student concerns.

**Monitor:**

- Review results after spring administration.

**Impact:**

Below are the results from the district survey that will be administered in the spring.

Survey Question	22-23	21-22	20-21	Benchmark
<i>Students in this school respect one another.</i>		15%	51%	75%
<i>Students of different cultural backgrounds, races or ethnicities get along well at school.</i>		56%	79%	75%
<i>I feel safe at school.</i>		58%	85%	75%

**Reflection:**

Generally, students are reporting that the majority of students do not respect one another or get along. Students are also reporting they do not feel safe at school. A deeper analysis of the results is necessary to investigate the reasons for students' feelings and perceptions.



## APPENDIX A - New York State ELA and Math Data

### ELA 2022

NYS 3-8: School proficiency rates for New York State ELA assessments are below by cohort. Number of students in parentheses.

School ① ...	Grade ② ▲	All	GE	SE
Roth	7	53% (n=143)	60% (n=124)	11% (n=19)
Roth	8	46% (n=153)	50% (n=138)	7% (n=15)
Roth		49% (n=296)	55% (n=262)	9% (n=34)

NYS 3-8: School proficiency rates for New York State ELA assessments are below by ethnicity. Number of students in parentheses.

School ① ▲	Grade ② ▲	Asian	Black or African American	Hispanic	Multi-Racial	White
Roth	7	74% (n=19)	25% (n=24)	33% (n=12)	63% (n=8)	59% (n=79)
Roth	8	52% (n=23)	33% (n=24)	29% (n=14)	43% (n=14)	51% (n=78)
Roth		62% (n=42)	29% (n=48)	31% (n=26)	50% (n=22)	55% (n=157)

**NYS 3-8: School Proficiency rates for New York State ELA assessments are below by ELL and SES. Number of students are in parentheses.**

School ① ▲	Grade ② ▲	Not ELL	ELL	Not Economically Disadvantaged	Economically Disadvantaged
Roth	7	56% (n=135)	0% (n=8)	62% (n=66)	45% (n=77)
Roth	8	48% (n=145)	0% (n=8)	56% (n=64)	38% (n=89)
Roth		52% (n=280)	0% (n=16)	59% (n=130)	42% (n=166)

## Math 2022

**NYS 3-8: School proficiency rates for New York State Math assessments are below by cohort. Number of students in parentheses.**

School ① ...	Grade	All	GE	SE
Roth	7	48% (n=132)	55% (n=113)	5% (n=19)
Roth	8	25% (n=112)	29% (n=98)	0% (n=14)
Roth		37% (n=244)	43% (n=211)	3% (n=33)

NYS 3-8: School proficiency rates for New York State Math assessments are below by ethnicity. Number of students in parentheses.

School ❶ ▲	Grade ❷ ▲	Asian	Black or African American	Hispanic	Multi-Racial	White
Roth	7	53% (n=19)	26% (n=23)	44% (n=9)	50% (n=8)	54% (n=72)
Roth	8	28% (n=18)	14% (n=21)	21% (n=14)	17% (n=12)	32% (n=47)
Roth		41% (n=37)	20% (n=44)	30% (n=23)	30% (n=20)	45% (n=119)

NYS 3-8: School Proficiency rates for New York State Math assessments are below by ELL and SES. Number of students are in parentheses.

School ❶ ▲	Grade ❷ ▲	Not ELL	ELL	Not Economically Disadvantaged	Economically Disadvantaged
Roth	7	51% (n=123)	0% (n=9)	65% (n=60)	33% (n=72)
Roth	8	26% (n=104)	13% (n=8)	34% (n=41)	20% (n=71)
Roth		40% (n=227)	6% (n=17)	52% (n=101)	27% (n=143)

Proficiency rates for the New York State Science Regents Exams are below by cohort. Number of students in parentheses.

	Year ① ▲	Exam ② ▲	All	General Education	Special Education
Passing	2021-2022	Earth Science	64 (n=165)	70 (n=149)	13 (n=16)
	2021-2022	Living Environment	84 (n=165)	87 (n=150)	53 (n=15)
CCR	2021-2022	Earth Science	40 (n=165)	44 (n=149)	0 (n=16)
	2021-2022	Living Environment	72 (n=165)	75 (n=150)	47 (n=15)

Proficiency rates for the New York State Science Regents Exams are below by ethnicity. Number of students in parentheses.

	Year ① ▲	Exam ② ▲	Asian	Black or African American	Hispanic	Multi-Racial	White
Passing	2021-2022	Earth Science	70 (n=23)	23 (n=26)	60 (n=15)	77 (n=13)	74 (n=88)
	2021-2022	Living Environment	89 (n=18)	75 (n=24)	64 (n=14)	100 (n=8)	87 (n=101)
CCR	2021-2022	Earth Science	43 (n=23)	19 (n=26)	27 (n=15)	38 (n=13)	48 (n=88)
	2021-2022	Living Environment	78 (n=18)	63 (n=24)	43 (n=14)	100 (n=8)	75 (n=101)

School Proficiency rates for New York State Regents exams are below by ELL and SES. Total number of students are in parentheses.

	Year ❶ ▲	Exam ❷ ▲	Not ELL	ELL	Not Economically Disadvantaged	Economically Disadvantaged
Passing	2021-2022	Earth Science	67 (n=157)	13 (n=8)	74 (n=77)	56 (n=88)
	2021-2022	Living Environment	84 (n=161)	75 (n=4)	92 (n=86)	76 (n=79)
CCR	2021-2022	Earth Science	42 (n=157)	0 (n=8)	51 (n=77)	31 (n=88)
	2021-2022	Living Environment	73 (n=161)	50 (n=4)	81 (n=86)	62 (n=79)

## APPENDIX B - NWEA MAP Data

### ELA Proficiency 2021-2022

ELA: Proficiency rates for the NWEA MAP ELA assessments (Fall/Winter/Spring) are below by cohort. Number of students in parentheses.

Year	Sch...	Gr	ALL			GE			SE		
			F	W	S	F	W	S	F	W	S
2021-2022	ROTH	7	51 (176)	46 (172)	42 (174)	57 (152)	50 (150)	46 (148)	8 (24)	18 (22)	19 (26)
2021-2022	ROTH	8	50 (177)	38 (174)	36 (168)	54 (159)	42 (157)	39 (152)	11 (18)	0 (17)	6 (16)
1 - 2 / 2 < >											
2021-2022	ROTH Total		50 (353)	42 (346)	39 (342)	56 (311)	46 (307)	42 (300)	10 (42)	10 (39)	14 (42)

Year	Sch	Gr	Not ELL			ELL			Not Economically Disadvantaged			Economically Disadvantaged		
			F	W	S	F	W	S	F	W	S	F	W	S
2021-2022	ROTH	8	52 (168)	40 (166)	38 (160)	0 (9)	0 (8)	0 (8)	56 (90)	45 (75)	51 (74)	44 (87)	32 (99)	23 (94)
2021-2022	ROTH	7	53 (169)	48 (163)	45 (164)	0 (7)	0 (9)	0 (10)	60 (97)	53 (87)	54 (85)	39 (79)	39 (85)	30 (89)
1 - 2 / 2 < >														
2021-2022	ROTH Total		53 (337)	44 (329)	41 (324)	0 (16)	0 (17)	0 (18)	58 (187)	49 (16...)	53 (159)	42 (166)	35 (184)	27 (183)

ELA: Proficiency rates for the NWEA MAP ELA assessments (Fall/Winter/Spring) are below by ethnicity. Number of students in parentheses.

			Asian			Black or African American			Hispanic			Multi-Racial			White		
Yr	Sch...	G...	F	W	S	F	W	S	F	W	S	F	W	S	F	W	S
2021-2022	ROTH	7	79 (19)	50 (20)	50 (22)	36 (25)	32 (25)	15 (26)	38 (13)	33 (12)	23 (13)	45 (11)	50 (12)	25 (12)	51 (108)	50 (103)	52 (100)
2021-2022	ROTH	8	52 (25)	46 (24)	43 (23)	29 (28)	23 (26)	17 (24)	38 (16)	29 (17)	13 (15)	56 (16)	39 (18)	38 (16)	57 (92)	42 (89)	42 (90)
1 - 2 / 2    <    >																	
2021-2022	ROTH Total		64 (44)	48 (44)	47 (45)	32 (53)	27 (51)	16 (50)	38 (29)	31 (29)	18 (28)	52 (27)	43 (30)	32 (28)	54 (200)	46 (192)	47 (190)

## ELA Growth 2022

ELA: Growth rates for the NWEA MAP ELA assessments (Fall/Winter/Spring) are below by cohort. Number of students in parentheses.

Year	Sch...	G...	ALL			GE			SE		
			F	W	S	F	W	S	F	W	S
2021-2022	ROTH	7	51 (157)	48 (166)	36 (164)	50 (135)	47 (144)	36 (138)	59 (22)	50 (22)	38 (26)
2021-2022	ROTH	8	46 (13)	41 (169)	38 (162)	57 (7)	41 (153)	38 (147)	33 (6)	44 (16)	40 (15)
1 - 2 / 2    <    >											
2021-2022	ROTH Total		51 (170)	44 (335)	37 (326)	50 (142)	44 (297)	37 (285)	54 (28)	47 (38)	39 (41)



			Not ELL			ELL			Not Economically Disadvantaged			Economically Disadvantaged		
Year...	Sch...	Gr	F	W	S	F	W	S	F	W	S	F	W	S
2021-2022	ROTH	8	45 (11)	40 (161)	38 (154)	50 (2)	63 (8)	38 (8)	67 (3)	40 (73)	46 (72)	40 (10)	43 (96)	32 (90)
2021-2022	ROTH	7	50 (151)	48 (159)	36 (157)	67 (6)	29 (7)	43 (7)	52 (87)	49 (83)	35 (82)	50 (70)	46 (83)	37 (82)
1 - 2 / 2    <    >														
2021-2022	ROTH Total		50 (162)	44 (320)	37 (311)	63 (8)	47 (15)	40 (15)	52 (90)	45 (156)	40 (154)	49 (80)	44 (179)	34 (172)

ELA: Growth rates for the NWEA MAP ELA assessments (Fall/Winter/Spring) are below by ethnicity. Number of students in parentheses.

			Asian			Black or African American			Hispanic			Multi-Racial			White		
Year	Sch...	G...	F	W	S	F	W	S	F	W	S	F	W	S	F	W	S
2021-2022	ROTH	7	94 (18)	28 (18)	28 (18)	20 (20)	48 (23)	17 (24)	33 (12)	55 (11)	27 (11)	44 (9)	64 (11)	55 (11)	52 (98)	49 (103)	41 (100)
2021-2022	ROTH	8	67 (3)	42 (24)	43 (23)	25 (4)	40 (25)	21 (24)	0 (2)	56 (16)	36 (14)	50 (2)	24 (17)	50 (14)	100 (2)	43 (87)	40 (87)
1 - 2 / 2    <    >																	
2021-2022	ROTH Total		90 (21)	36 (42)	37 (41)	21 (24)	44 (48)	19 (48)	29 (14)	56 (27)	32 (25)	45 (11)	39 (28)	52 (25)	53 (100)	46 (190)	41 (187)

## Math Proficiency 2022

Math: Proficiency rates for the NWEA MAP Math assessments (Fall/Winter/Spring) are below by cohort. Number of students in parentheses.

Year	Sch...	Gr	ALL			GE			SE		
			F	W	S	F	W	S	F	W	S
2021-2022	ROTH	7	49 (175)	42 (171)	45 (174)	54 (152)	47 (150)	50 (153)	13 (23)	0 (21)	10 (21)
2021-2022	ROTH	8	43 (178)	35 (177)	35 (169)	48 (160)	39 (160)	39 (153)	6 (18)	0 (17)	0 (16)
2021-2022	ROTH	9	0 (23)	4 (24)	11 (35)	0 (13)	8 (13)	15 (26)	0 (10)	0 (11)	0 (9)
1 - 3 / 3 < >											
2021-2022	ROTH Total		43 (376)	36 (372)	37 (378)	49 (325)	41 (323)	42 (332)	8 (51)	0 (49)	4 (46)

Year	Sch	Gr	Not ELL			ELL			Not Economically Disadvantaged			Economically Disadvantaged		
			F	W	S	F	W	S	F	W	S	F	W	S
2021-2022	ROTH	9	0 (21)	5 (22)	12 (33)	0 (2)	0 (2)	0 (2)	0 (6)	0 (4)	38 (8)	0 (17)	5 (20)	4 (27)
2021-2022	ROTH	8	46 (169)	36 (169)	36 (161)	0 (9)	13 (8)	13 (8)	54 (90)	41 (78)	46 (74)	32 (88)	30 (99)	26 (95)
2021-2022	ROTH	7	51 (168)	44 (162)	47 (164)	0 (7)	0 (9)	10 (10)	65 (96)	61 (87)	61 (85)	29 (79)	21 (84)	29 (89)
1 - 3 / 3 < >														
2021-2022	ROTH Total		45 (358)	38 (353)	39 (358)	0 (18)	5 (19)	10 (20)	58 (192)	50 (16...)	53 (167)	28 (184)	24 (203)	25 (211)

Math: Proficiency rates for the NWEA MAP Math assessments (Fall/Winter/Spring) are below by ethnicity. Number of students in parentheses.

			Asian			Black or African American			Hispanic			Multi-Racial			White		
Yr	Sch...	G...	F	W	S	F	W	S	F	W	S	F	W	S	F	W	S
2021-2022	ROTH	7	63 (19)	45 (20)	55 (22)	20 (25)	17 (24)	31 (26)	23 (13)	17 (12)	23 (13)	45 (11)	42 (12)	33 (12)	56 (107)	50 (103)	50 (101)
2021-2022	ROTH	8	48 (25)	46 (24)	52 (23)	14 (28)	8 (26)	13 (24)	29 (17)	24 (17)	20 (15)	38 (16)	22 (18)	29 (17)	54 (92)	45 (92)	40 (90)
2021-2022	ROTH	9	0 (3)	0 (2)	0 (3)	0 (5)	0 (6)	0 (6)	0 (6)	0 (7)	0 (8)	null	null	null	0 (9)	11 (9)	22 (18)
1 - 3 / 3 < >																	
2021-2022	ROTH Total		51 (47)	43 (46)	50 (48)	16 (58)	11 (56)	20 (56)	22 (36)	17 (36)	17 (36)	41 (27)	30 (30)	31 (29)	53 (208)	46 (204)	44 (209)

## Math Growth 2022

Math: Growth rates for the NWEA MAP Math assessments (Fall/Winter/Spring) are below by cohort. Number of students in parentheses.

Year	Sch...	G...	ALL			GE			SE		
			F	W	S	F	W	S	F	W	S
2021-2022	ROTH	7	60 (157)	45 (163)	45 (164)	63 (136)	46 (142)	47 (143)	38 (21)	33 (21)	29 (21)
2021-2022	ROTH	8	37 (27)	45 (173)	49 (164)	32 (19)	46 (157)	50 (149)	50 (8)	31 (16)	40 (15)
2021-2022	ROTH	9	30 (10)	50 (22)	45 (22)	25 (8)	50 (12)	69 (13)	50 (2)	50 (10)	11 (9)
1 - 3 / 3 < >											
2021-2022	ROTH Total		55 (194)	45 (358)	47 (350)	58 (163)	47 (311)	50 (305)	42 (31)	36 (47)	29 (45)

Year...	Sch...	Gr	Not ELL			ELL			Not Economically Disadvantaged			Economically Disadvantaged		
			F	W	S	F	W	S	F	W	S	F	W	S
2021-2022	ROTH	9	33 (9)	45 (20)	45 (20)	0 (1)	100 (2)	50 (2)	67 (3)	50 (4)	25 (4)	14 (7)	50 (18)	50 (18)
2021-2022	ROTH	8	36 (25)	44 (165)	49 (156)	50 (2)	75 (8)	63 (8)	27 (11)	45 (76)	53 (72)	44 (16)	45 (97)	47 (92)
2021-2022	ROTH	7	61 (151)	46 (156)	45 (157)	33 (6)	29 (7)	43 (7)	68 (85)	50 (82)	47 (81)	50 (72)	40 (81)	42 (83)
1 - 3 / 3 < >														
2021-2022	ROTH Total		56 (185)	45 (341)	47 (333)	33 (9)	59 (17)	53 (17)	64 (99)	48 (162)	49 (157)	46 (95)	43 (196)	45 (193)

Math: Growth rates for the NWEA MAP Math assessments (Fall/Winter/Spring) are below by ethnicity. Number of students in parentheses.

			Asian			Black or African American			Hispanic			Multi-Racial			White		
Year	Sch...	G...	F	W	S	F	W	S	F	W	S	F	W	S	F	W	S
2021-2022	ROTH	7	83 (18)	44 (18)	44 (18)	50 (20)	50 (22)	50 (24)	42 (12)	55 (11)	27 (11)	56 (9)	55 (11)	27 (11)	60 (98)	42 (101)	47 (100)
2021-2022	ROTH	8	25 (4)	67 (24)	65 (23)	43 (7)	44 (25)	38 (24)	0 (3)	59 (17)	60 (15)	0 (2)	12 (17)	47 (15)	55 (11)	43 (90)	47 (87)
2021-2022	ROTH	9	0 (2)	100 (2)	67 (3)	0 (2)	60 (5)	50 (4)	33 (3)	50 (6)	33 (6)	null	null	null	67 (3)	33 (9)	44 (9)
1 - 3 / 3    <    >																	
2021-2022	ROTH Total		67 (24)	59 (44)	57 (44)	45 (29)	48 (52)	44 (52)	33 (18)	56 (34)	44 (32)	45 (11)	29 (28)	38 (26)	60 (112)	42 (200)	47 (196)